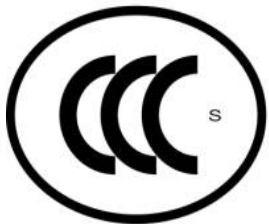


China Compulsory Certification (CCC) System

Gearmotor with CCC Mark

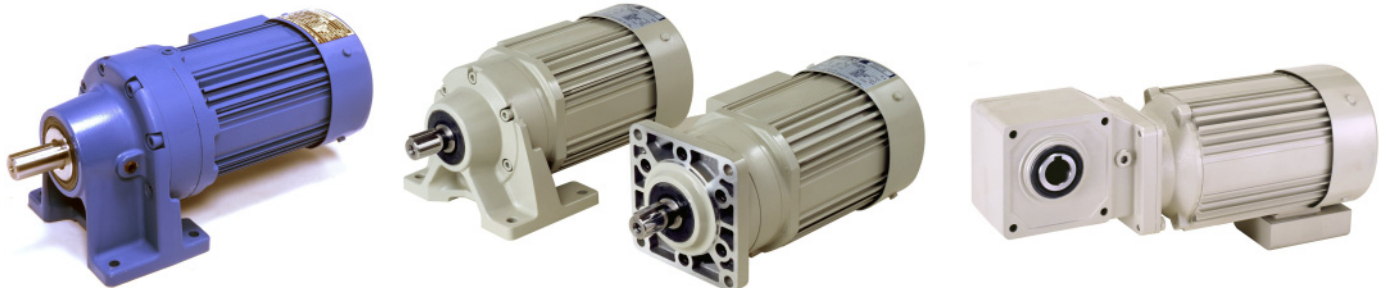


China Compulsory Certificate

CYCLO DRIVE, ALTAX α , HYPONIC DRIVE

Wide range:

| | |
|--------------------|-----------|
| Single phase motor | 15W~750W |
| Three phase motor | 40W~1.1kW |
| AF motor | 100W~750W |



Gearmotor with CCC Mark

Gearmotor corresponds to China Compulsory Certification (CCC) fully implemented August 1, 2003.

- CCC Mark is displayed on motor nameplate
Subject certified items: Small capacity motor (CNCA-01C-013)
Motor with 36V and above, with capacity up to 1.1kW at 1500r/min
- Certified motor units enable use in various gearmotors.
CYCLO DRIVE, ALTAX α , HYPONIC DRIVE, and more
Astero is currently in the application process.

Motor Production Range

| Motor type | Single phase motor | Three phase motor | AF motor |
|------------------------|---|--|----------------------------------|
| Capacity range | 15W~750W | 40W~1.1kW | 100W~750W |
| Pole | 4P | | |
| Power supply | Single phase 200/220V 50Hz | Three phase 220/380V 50Hz | Three phase 220/380V 50Hz |
| Protection | IP44 (indoor), IP55 (outdoor) | | |
| Structure | Totally enclosed non-ventilated type (15~40W) Totally enclosed fan-cooled type (60~750W) | Totally enclosed non-ventilated type (40~100W) Totally enclosed fan-cooled type (0.2~1.1kW) | Totally enclosed fan-cooled type |
| Time rating | Continuous rating | | |
| Insulation | Class E (15~90W) Class B (100~750W) | Class E (40~90W) Class F (0.1~1.1kW) | Class F |
| Application standard | GB12350-2000 | | |
| Corresponding reducers | CYCLO DRIVE 6000#, ALTAX α , HYPONIC DRIVE, and more | | |

Foot mount type for AF motor.

Consult our distributor or sales office for detailed specification for motors corresponding to CCC.



China Compulsory Certificate <CCC Mark>

● Overview of China Compulsory Certification System

China has officially announced the new China Compulsory Certification system (CCC) which was implemented starting May 1, 2002. CCC has unified two traditional certification systems (CCIB/CCEE), covering mainly household electric appliances, as becoming a full member of World Trade Organization (WTO) in December 2001.

Following this unification, subject items were extended to 19 varieties (132 items).

Transition period from old system has been completed and new certification system is operating in full-scale from August 1, 2003. Items without CCC mark is not allowed to ship, import, or sell in China. (Violation is subject to punishment).

CCC Mark

CCC Mark is applied to motor nameplate in Chinese.

Nameplate in motor



CCC Mark sticker



Sample certificate

